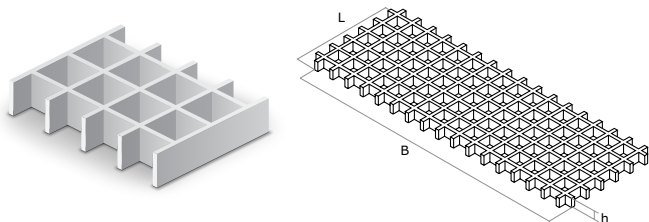


TECHNICAL DATA SHEET FOR GRATINGS



Grating

Stock Item

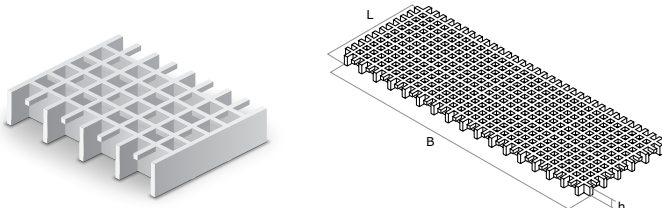


H	BxL	Grid size	Open area	E0o	Weight
mm	mm	mm	%	GPa	kg/m ²
12,5	1220x3658	50x50	72	-	4
25	1220x3658	38x38	70	15	12,3
25	1007x2007	40x40	68	15	12,3
25	1007x3007	40x40	68	15	12,3
25	1007x4047	40x40	68	15	12,3
30	1220x3658	38x38	70	15	14,6
30	1007x2007	40x40	68	15	14,7
30	1007x3007	40x40	68	15	14,7
30	1007x4047	40x40	68	15	14,7
38	1220x3658	38x38	70	15	18,6
38	1007x2007	40x40	68	15	18,5
38	1007x3007	40x40	68	15	18,5
38	1007x4047	40x40	68	15	18,5
50	1220x3658	50x50	72	15	21,9

Other grid sizes and panel sizes can be ordered separately. Moulded gratings are available in several qualities.

Minimesh Grating

Stock Item

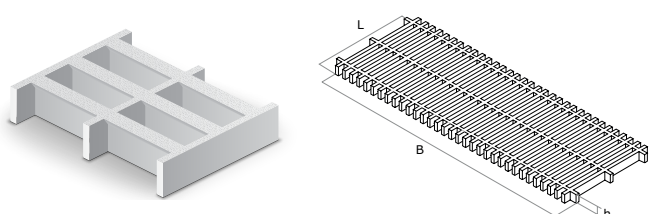


H	BxL	Grid size	Open area	E0o	Weight
mm	mm	mm	%	GPa	kg/m ²
30	1007x3007	20x20	42	18,9	19
38	1220x3660	19x19	44	18,9	23

Other dimensions can be supplied as required.

Superspan Grating

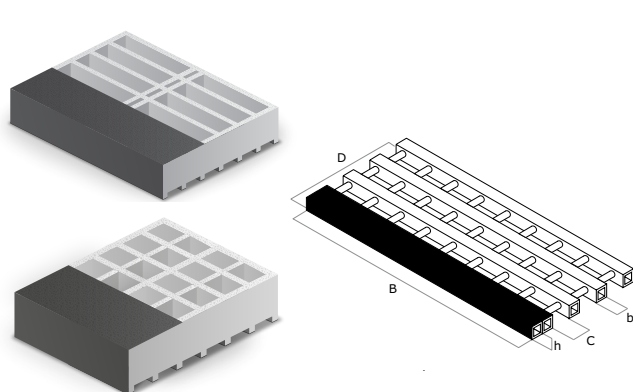
Stock Item



H	BxL	Grid size	Open area	E0o	Weight
mm	mm	mm	%	GPa	kg/m ²
38	1220x3658	38x152	55	-	21,5

Stair treads

Stock Item



H	BxL	Grid size	Open area	E0o	Weight
mm	mm	mm	%	GPa	kg/m ²
38	565x3047	25x150	55	15	23
38	347x3050	38x38	52	15	19

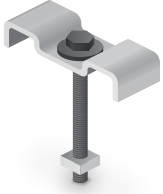
NB two stock categories:

1. Standard stock profiles which you will always find on stock.
2. Profiles manufactured to orders (minimum volumes apply). However, these are popular geometries and might also be on stock. Please, contact us for availability on specific profile.



Accessories for moulded and pultruded gratings

All steel parts are in acid-resistant stainless steel. EN 1.4404



M-Clip

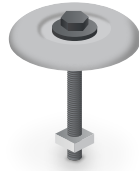
Product number: 149107

The bracket is used for the assembly of Fiberline gratings and can be combined with clamps.

It comes with M6x70 bolt (ISO 4017), square nut and washer (ISO 7093).

All parts are made of acid-resistant stainless steel (1.4404 / AISI 316L)

This item is sold as 50 pcs. in a pre-packed box.



W-Clip

Product number: 149108

The bracket is for the assembly of the Fiberline mini-mesh gratings, but can also be used for other types of gratings.

It comes with M8x70 bolt (ISO 4017), square nut and washer (ISO 7093).

All parts are made of acid-resistant stainless steel (1.4404 / AISI 316L)

This item is sold as 20 pcs. in a pre-packed box.



U-Clip

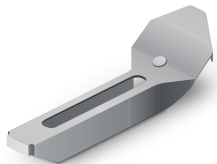
Product number: 149106

It is used for the assembly of Fiberline profile gratings and step gratings. It can be used for all heights and for 10-35 mm profile spacing. Can also be used with clamps.

It comes with M6x70 bolt (ISO 10642) and washer (ISO 7093)

All parts are made of acid-resistant stainless steel (1.4404 / AISI 316L)

This item is sold as 20 pcs. in a pre-packed box.



Clamp M6

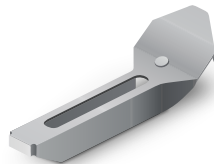
Product number: 149109

The bracket is used in combination with M-clip or W-clip to ensure easy assembly and removal of the Fiberline gratings without the need for special tools.

Fits M6 bolt size.

All parts are made of acid-resistant stainless steel (1.4404 / AISI 316L)

This item is sold as 25 pcs. in a pre-packed box.



Clamp M8

Product number: 149110

The bracket is used in combination with M-clip or W-clip to ensure easy assembly and removal of the Fiberline gratings without the need for special tools.

Fits M8 bolt size.

All parts are made of acid-resistant stainless steel (1.4404 / AISI 316L)

This item is sold as 25 pcs. in a pre-packed box.



Grating 25 x 1007 mm

Single span with line load			
	Load capacity per meter width at L/200 [kN/m]	Load capacity per meter width at L/300 [kN/m]	Load bearing capacity per meter width [kN/m]
Span L [m]	z-axis	z-axis	z-axis
0,50	8,26	5,51	69,11
0,60	4,79	3,20	48,00
0,70	3,02	2,02	35,26
0,80	2,03	1,35	27,00
0,90	1,43	0,95	21,33
1,00	1,04	0,69	17,28
1,25	0,53	0,36	11,06
1,50	0,31	0,21	7,68
1,75	0,19	0,13	5,64
2,00	0,13	0,09	4,32

* Load-bearing capacity governed

Two spans with line load			
	Load capacity per meter width at L/200 [kN/m]	Load capacity per meter width at L/300 [kN/m]	Load bearing capacity per meter width [kN/m]
Span L [m]	z-axis	z-axis	z-axis
0,50	19,59	13,06	69,11
0,60	11,41	7,61	48,00
0,70	7,22	4,81	35,26
0,80	4,85	3,23	27,00
0,90	3,41	2,27	21,33
1,00	2,49	1,66	17,28
1,25	1,28	0,85	11,06
1,50	0,74	0,49	7,68
1,75	0,47	0,31	5,64
2,00	0,31	0,21	4,32

* Load-bearing capacity governed

Three spans with line load			
	Load capacity per meter width at L/200 [kN/m]	Load capacity per meter width at L/300 [kN/m]	Load bearing capacity per meter width [kN/m]
Span L [m]	z-axis	z-axis	z-axis
0,50	15,50	10,34	86,39
0,60	9,02	6,01	59,99
0,70	5,70	3,80	44,08
0,80	3,83	2,55	33,75
0,90	2,69	1,79	26,66
1,00	1,96	1,31	21,60
1,25	1,01	0,67	13,82
1,50	0,58	0,39	9,60
1,75	0,37	0,25	7,05
2,00	0,25	0,16	5,40

* Load-bearing capacity governed

Single span with point load			
	Load capacity per meter width at L/200 [kN]	Load capacity per meter width at L/300 [kN]	Load bearing capacity per meter width [kN]
Span L [m]	z-axis	z-axis	z-axis
0,50	5,18	3,45	17,28
0,60	3,00	2,00	14,40
0,70	1,89	1,26	12,34
0,80	1,27	0,85	10,80
0,90	0,89	0,59	9,60
1,00	0,65	0,43	8,64
1,25	0,33	0,22	6,91
1,50	0,19	0,13	5,76
1,75	0,12	0,08	4,94
2,00	0,08	0,05	4,32

* Load-bearing capacity governed

Two spans with point load			
	Load capacity per meter width at L/200 [kN]	Load capacity per meter width at L/300 [kN]	Load bearing capacity per meter width [kN]
Span L [m]	z-axis	z-axis	z-axis
0,50	7,18	4,79	21,28
0,60	4,17	2,78	17,73
0,70	2,63	1,75	15,20
0,80	1,76	1,17	13,30
0,90	1,24	0,83	11,82
1,00	0,90	0,60	10,64
1,25	0,46	0,31	8,51
1,50	0,27	0,18	7,09
1,75	0,17	0,11	6,08
2,00	0,11	0,08	5,32

* Load-bearing capacity governed

Three spans with point load			
	Load capacity per meter width at L/200 [kN]	Load capacity per meter width at L/300 [kN]	Load bearing capacity per meter width [kN]
Span L [m]	z-axis	z-axis	z-axis
0,50	7,38	4,92	21,60
0,60	4,28	2,86	18,00
0,70	2,70	1,80	15,43
0,80	1,81	1,21	13,50
0,90	1,27	0,85	12,00
1,00	0,93	0,62	10,80
1,25	0,48	0,32	8,64
1,50	0,28	0,18	7,20
1,75	0,17	0,12	6,17
2,00	0,12	0,08	5,40

* Load-bearing capacity governed



Grating 25 x 1220 mm

Single span with line load			
	Load capacity per meter width at L/200 [kN/m]	Load capacity per meter width at L/300 [kN/m]	Load bearing capacity per meter width [kN/m]
Span L [m]	z-axis	z-axis	z-axis
0,50	7,71	5,14	63,00
0,60	4,47	2,98	43,75
0,70	2,82	1,88	32,14
0,80	1,89	1,26	24,61
0,90	1,33	0,89	19,44
1,00	0,97	0,65	15,75
1,25	0,50	0,33	10,08
1,50	0,29	0,19	7,00
1,75	0,18	0,12	5,14
2,00	0,12	0,08	3,94

* Load-bearing capacity governed

Two spans with line load			
	Load capacity per meter width at L/200 [kN/m]	Load capacity per meter width at L/300 [kN/m]	Load bearing capacity per meter width [kN/m]
Span L [m]	z-axis	z-axis	z-axis
0,50	18,25	12,17	63,00
0,60	10,64	7,09	43,75
0,70	6,73	4,49	32,14
0,80	4,52	3,02	24,61
0,90	3,18	2,12	19,44
1,00	2,32	1,55	15,75
1,25	1,19	0,80	10,08
1,50	0,69	0,46	7,00
1,75	0,44	0,29	5,14
2,00	0,29	0,19	3,94

* Load-bearing capacity governed

Three spans with line load			
	Load capacity per meter width at L/200 [kN/m]	Load capacity per meter width at L/300 [kN/m]	Load bearing capacity per meter width [kN/m]
Span L [m]	z-axis	z-axis	z-axis
0,50	14,45	9,64	78,75
0,60	8,41	5,61	54,69
0,70	5,32	3,55	40,18
0,80	3,57	2,38	30,76
0,90	2,51	1,67	24,31
1,00	1,83	1,22	19,69
1,25	0,94	0,63	12,60
1,50	0,54	0,36	8,75
1,75	0,34	0,23	6,43
2,00	0,23	0,15	4,92

* Load-bearing capacity governed

Single span with point load			
	Load capacity per meter width at L/200 [kN]	Load capacity per meter width at L/300 [kN]	Load bearing capacity per meter width [kN]
Span L [m]	z-axis	z-axis	z-axis
0,50	4,84	3,22	15,75
0,60	2,80	1,87	13,13
0,70	1,77	1,18	11,25
0,80	1,19	0,79	9,84
0,90	0,83	0,56	8,75
1,00	0,61	0,40	7,88
1,25	0,31	0,21	6,30
1,50	0,18	0,12	5,25
1,75	0,11	0,08	4,50
2,00	0,08	0,05	3,94

* Load-bearing capacity governed

Two spans with point load			
	Load capacity per meter width at L/200 [kN]	Load capacity per meter width at L/300 [kN]	Load bearing capacity per meter width [kN]
Span L [m]	z-axis	z-axis	z-axis
0,50	6,70	4,47	19,40
0,60	3,89	2,59	16,16
0,70	2,45	1,63	13,85
0,80	1,64	1,10	12,12
0,90	1,16	0,77	10,78
1,00	0,84	0,56	9,70
1,25	0,43	0,29	7,76
1,50	0,25	0,17	6,47
1,75	0,16	0,11	5,54
2,00	0,11	0,07	4,85

* Load-bearing capacity governed

Three spans with point load			
	Load capacity per meter width at L/200 [kN]	Load capacity per meter width at L/300 [kN]	Load bearing capacity per meter width [kN]
Span L [m]	z-axis	z-axis	z-axis
0,50	6,89	4,59	19,69
0,60	4,00	2,67	16,41
0,70	2,52	1,68	14,06
0,80	1,69	1,13	12,30
0,90	1,19	0,79	10,94
1,00	0,87	0,58	9,84
1,25	0,44	0,30	7,88
1,50	0,26	0,17	6,56
1,75	0,16	0,11	5,63
2,00	0,11	0,07	4,92

* Load-bearing capacity governed



Grating 30 x 1007 mm

Single span with line load			
	Load capacity per meter width at L/200 [kN/m]	Load capacity per meter width at L/300 [kN/m]	Load bearing capacity per meter width [kN/m]
Span L [m]	z-axis	z-axis	z-axis
0,50	15,79	10,53	106,73
0,60	9,18	6,12	74,11
0,70	5,80	3,87	54,45
0,80	3,89	2,59	41,69
0,90	2,74	1,82	32,94
1,00	2,00	1,33	26,68
1,25	1,02	0,68	17,08
1,50	0,59	0,40	11,86
1,75	0,37	0,25	8,71
2,00	0,25	0,17	6,67

* Load-bearing capacity governed

Two spans with line load			
	Load capacity per meter width at L/200 [kN/m]	Load capacity per meter width at L/300 [kN/m]	Load bearing capacity per meter width [kN/m]
Span L [m]	z-axis	z-axis	z-axis
0,50	37,15	24,77	106,73
0,60	21,74	14,49	74,11
0,70	13,78	9,19	54,45
0,80	9,27	6,18	41,69
0,90	6,53	4,35	32,94
1,00	4,77	3,18	26,68
1,25	2,45	1,63	17,08
1,50	1,42	0,95	11,86
1,75	0,90	0,60	8,71
2,00	0,60	0,40	6,67

* Load-bearing capacity governed

Three spans with line load			
	Load capacity per meter width at L/200 [kN/m]	Load capacity per meter width at L/300 [kN/m]	Load bearing capacity per meter width [kN/m]
Span L [m]	z-axis	z-axis	z-axis
0,50	29,49	19,66	133,41
0,60	17,22	11,48	92,64
0,70	10,90	7,27	68,06
0,80	7,33	4,88	52,11
0,90	5,16	3,44	41,17
1,00	3,77	2,51	33,35
1,25	1,93	1,29	21,35
1,50	1,12	0,75	14,82
1,75	0,71	0,47	10,89
2,00	0,47	0,32	8,34

* Load-bearing capacity governed

Single span with point load			
	Load capacity per meter width at L/200 [kN]	Load capacity per meter width at L/300 [kN]	Load bearing capacity per meter width [kN]
Span L [m]	z-axis	z-axis	z-axis
0,50	9,93	6,62	26,68
0,60	5,76	3,84	22,23
0,70	3,63	2,42	19,06
0,80	2,44	1,63	16,68
0,90	1,71	1,14	14,82
1,00	1,25	0,83	13,34
1,25	0,64	0,43	10,67
1,50	0,37	0,25	8,89
1,75	0,23	0,16	7,62
2,00	0,16	0,10	6,67

* Load-bearing capacity governed

Two spans with point load			
	Load capacity per meter width at L/200 [kN]	Load capacity per meter width at L/300 [kN]	Load bearing capacity per meter width [kN]
Span L [m]	z-axis	z-axis	z-axis
0,50	13,74	9,16	32,86
0,60	7,98	5,32	27,38
0,70	5,04	3,36	23,47
0,80	3,38	2,25	20,54
0,90	2,38	1,58	18,25
1,00	1,73	1,16	16,43
1,25	0,89	0,59	13,14
1,50	0,51	0,34	10,95
1,75	0,32	0,22	9,39
2,00	0,22	0,14	8,21

* Load-bearing capacity governed

Three spans with point load			
	Load capacity per meter width at L/200 [kN]	Load capacity per meter width at L/300 [kN]	Load bearing capacity per meter width [kN]
Span L [m]	z-axis	z-axis	z-axis
0,50	14,12	9,42	33,35
0,60	8,21	5,47	27,79
0,70	5,18	3,45	23,82
0,80	3,48	2,32	20,84
0,90	2,44	1,63	18,53
1,00	1,78	1,19	16,68
1,25	0,91	0,61	13,34
1,50	0,53	0,35	11,12
1,75	0,33	0,22	9,53
2,00	0,22	0,15	8,34

* Load-bearing capacity governed



Grating 30 x 1220 mm

Single span with line load			
	Load capacity per meter width at L/200 [kN/m]	Load capacity per meter width at L/300 [kN/m]	Load bearing capacity per meter width [kN/m]
Span L [m]	z-axis	z-axis	z-axis
0,50	15,27	10,18	101,08
0,60	8,88	5,92	70,20
0,70	5,61	3,74	51,57
0,80	3,77	2,51	39,49
0,90	2,65	1,77	31,20
1,00	1,93	1,29	25,27
1,25	0,99	0,66	16,17
1,50	0,57	0,38	11,23
1,75	0,36	0,24	8,25
2,00	0,24	0,16	6,32

* Load-bearing capacity governed

Two spans with line load			
	Load capacity per meter width at L/200 [kN/m]	Load capacity per meter width at L/300 [kN/m]	Load bearing capacity per meter width [kN/m]
Span L [m]	z-axis	z-axis	z-axis
0,50	35,87	23,92	101,08
0,60	21,01	14,00	70,20
0,70	13,32	8,88	51,57
0,80	8,97	5,98	39,49
0,90	6,32	4,21	31,20
1,00	4,62	3,08	25,27
1,25	2,37	1,58	16,17
1,50	1,38	0,92	11,23
1,75	0,87	0,58	8,25
2,00	0,58	0,39	6,32

* Load-bearing capacity governed

Three spans with line load			
	Load capacity per meter width at L/200 [kN/m]	Load capacity per meter width at L/300 [kN/m]	Load bearing capacity per meter width [kN/m]
Span L [m]	z-axis	z-axis	z-axis
0,50	28,49	19,00	126,35
0,60	16,64	11,10	87,75
0,70	10,54	7,03	64,47
0,80	7,09	4,73	49,36
0,90	4,99	3,33	39,00
1,00	3,65	2,43	31,59
1,25	1,87	1,25	20,22
1,50	1,08	0,72	14,04
1,75	0,68	0,46	10,31
2,00	0,46	0,31	7,90

* Load-bearing capacity governed

Single span with point load			
	Load capacity per meter width at L/200 [kN]	Load capacity per meter width at L/300 [kN]	Load bearing capacity per meter width [kN]
Span L [m]	z-axis	z-axis	z-axis
0,50	9,61	6,40	25,27
0,60	5,58	3,72	21,06
0,70	3,52	2,35	18,05
0,80	2,36	1,57	15,79
0,90	1,66	1,11	14,04
1,00	1,21	0,81	12,64
1,25	0,62	0,41	10,11
1,50	0,36	0,24	8,42
1,75	0,23	0,15	7,22
2,00	0,15	0,10	6,32

* Load-bearing capacity governed

Two spans with point load			
	Load capacity per meter width at L/200 [kN]	Load capacity per meter width at L/300 [kN]	Load bearing capacity per meter width [kN]
Span L [m]	z-axis	z-axis	z-axis
0,50	13,29	8,86	31,12
0,60	7,72	5,15	25,93
0,70	4,88	3,25	22,23
0,80	3,27	2,18	19,45
0,90	2,30	1,53	17,29
1,00	1,68	1,12	15,56
1,25	0,86	0,57	12,45
1,50	0,50	0,33	10,37
1,75	0,31	0,21	8,89
2,00	0,21	0,14	7,78

* Load-bearing capacity governed

Three spans with point load			
	Load capacity per meter width at L/200 [kN]	Load capacity per meter width at L/300 [kN]	Load bearing capacity per meter width [kN]
Span L [m]	z-axis	z-axis	z-axis
0,50	13,66	9,11	31,59
0,60	7,94	5,29	26,32
0,70	5,01	3,34	22,56
0,80	3,37	2,24	19,74
0,90	2,37	1,58	17,55
1,00	1,73	1,15	15,79
1,25	0,89	0,59	12,64
1,50	0,51	0,34	10,53
1,75	0,32	0,22	9,03
2,00	0,22	0,14	7,90

* Load-bearing capacity governed



Grating 38 x 1007 mm

Single span with line load			
	Load capacity per meter width at L/200 [kN/m]	Load capacity per meter width at L/300 [kN/m]	Load bearing capacity per meter width [kN/m]
Span L [m]	z-axis	z-axis	z-axis
0,50	32,72	21,81	174,90
0,60	19,09	12,72	121,46
0,70	12,08	8,05	89,23
0,80	8,12	5,41	68,32
0,90	5,71	3,81	53,98
1,00	4,17	2,78	43,72
1,25	2,14	1,43	27,98
1,50	1,24	0,83	19,43
1,75	0,78	0,52	14,28
2,00	0,52	0,35	10,93

* Load-bearing capacity governed

Two spans with line load			
	Load capacity per meter width at L/200 [kN/m]	Load capacity per meter width at L/300 [kN/m]	Load bearing capacity per meter width [kN/m]
Span L [m]	z-axis	z-axis	z-axis
0,50	75,83	50,55	174,90
0,60	44,71	29,80	121,46
0,70	28,48	18,98	89,23
0,80	19,22	12,81	68,32
0,90	13,57	9,05	53,98
1,00	9,93	6,62	43,72
1,25	5,11	3,41	27,98
1,50	2,97	1,98	19,43
1,75	1,87	1,25	14,28
2,00	1,26	0,84	10,93

* Load-bearing capacity governed

Three spans with line load			
	Load capacity per meter width at L/200 [kN/m]	Load capacity per meter width at L/300 [kN/m]	Load bearing capacity per meter width [kN/m]
Span L [m]	z-axis	z-axis	z-axis
0,50	60,51	40,34	218,62
0,60	35,54	23,69	151,82
0,70	22,59	15,06	111,54
0,80	15,22	10,15	85,40
0,90	10,73	7,16	67,48
1,00	7,85	5,23	54,66
1,25	4,04	2,69	34,98
1,50	2,34	1,56	24,29
1,75	1,48	0,98	17,85
2,00	0,99	0,66	13,66

* Load-bearing capacity governed

Single span with point load			
	Load capacity per meter width at L/200 [kN]	Load capacity per meter width at L/300 [kN]	Load bearing capacity per meter width [kN]
Span L [m]	z-axis	z-axis	z-axis
0,50	20,65	13,77	43,72
0,60	12,01	8,01	36,44
0,70	7,59	5,06	31,23
0,80	5,09	3,40	27,33
0,90	3,58	2,39	24,29
1,00	2,61	1,74	21,86
1,25	1,34	0,89	17,49
1,50	0,78	0,52	14,57
1,75	0,49	0,33	12,49
2,00	0,33	0,22	10,93

* Load-bearing capacity governed

Two spans with point load			
	Load capacity per meter width at L/200 [kN]	Load capacity per meter width at L/300 [kN]	Load bearing capacity per meter width [kN]
Span L [m]	z-axis	z-axis	z-axis
0,50	28,50	19,00	53,85
0,60	16,61	11,07	44,87
0,70	10,50	7,00	38,46
0,80	7,06	4,70	33,65
0,90	4,96	3,31	29,92
1,00	3,62	2,42	26,92
1,25	1,86	1,24	21,54
1,50	1,08	0,72	17,95
1,75	0,68	0,45	15,39
2,00	0,45	0,30	13,46

* Load-bearing capacity governed

Three spans with point load			
	Load capacity per meter width at L/200 [kN]	Load capacity per meter width at L/300 [kN]	Load bearing capacity per meter width [kN]
Span L [m]	z-axis	z-axis	z-axis
0,50	29,29	19,53	54,66
0,60	17,07	11,38	45,55
0,70	10,80	7,20	39,04
0,80	7,25	4,84	34,16
0,90	5,11	3,40	30,36
1,00	3,73	2,48	27,33
1,25	1,91	1,27	21,86
1,50	1,11	0,74	18,22
1,75	0,70	0,47	15,62
2,00	0,47	0,31	13,66

* Load-bearing capacity governed



Grating 38 x 1220 mm

Single span with line load			
	Load capacity per meter width at L/200 [kN/m]	Load capacity per meter width at L/300 [kN/m]	Load bearing capacity per meter width [kN/m]
Span L [m]	z-axis	z-axis	z-axis
0,50	32,18	21,45	168,79
0,60	18,77	12,51	117,21
0,70	11,88	7,92	86,12
0,80	7,98	5,32	65,93
0,90	5,62	3,75	52,09
1,00	4,10	2,73	42,20
1,25	2,11	1,40	27,01
1,50	1,22	0,81	18,75
1,75	0,77	0,51	13,78
2,00	0,52	0,34	10,55

* Load-bearing capacity governed

Two spans with line load			
	Load capacity per meter width at L/200 [kN/m]	Load capacity per meter width at L/300 [kN/m]	Load bearing capacity per meter width [kN/m]
Span L [m]	z-axis	z-axis	z-axis
0,50	74,57	49,71	168,79
0,60	43,96	29,31	117,21
0,70	28,00	18,67	86,12
0,80	18,90	12,60	65,93
0,90	13,34	8,90	52,09
1,00	9,76	6,51	42,20
1,25	5,03	3,35	27,01
1,50	2,92	1,95	18,75
1,75	1,84	1,23	13,78
2,00	1,24	0,82	10,55

* Load-bearing capacity governed

Three spans with line load			
	Load capacity per meter width at L/200 [kN/m]	Load capacity per meter width at L/300 [kN/m]	Load bearing capacity per meter width [kN/m]
Span L [m]	z-axis	z-axis	z-axis
0,50	59,51	39,67	210,98
0,60	34,95	23,30	146,52
0,70	22,21	14,81	107,64
0,80	14,97	9,98	82,42
0,90	10,56	7,04	65,12
1,00	7,72	5,15	52,75
1,25	3,97	2,65	33,76
1,50	2,30	1,54	23,44
1,75	1,45	0,97	17,22
2,00	0,97	0,65	13,19

* Load-bearing capacity governed

Single span with point load			
	Load capacity per meter width at L/200 [kN]	Load capacity per meter width at L/300 [kN]	Load bearing capacity per meter width [kN]
Span L [m]	z-axis	z-axis	z-axis
0,50	20,31	13,54	42,20
0,60	11,81	7,87	35,16
0,70	7,46	4,97	30,14
0,80	5,01	3,34	26,37
0,90	3,52	2,35	23,44
1,00	2,57	1,71	21,10
1,25	1,32	0,88	16,88
1,50	0,76	0,51	14,07
1,75	0,48	0,32	12,06
2,00	0,32	0,21	10,55

* Load-bearing capacity governed

Two spans with point load			
	Load capacity per meter width at L/200 [kN]	Load capacity per meter width at L/300 [kN]	Load bearing capacity per meter width [kN]
Span L [m]	z-axis	z-axis	z-axis
0,50	28,03	18,68	51,97
0,60	16,33	10,89	43,31
0,70	10,33	6,89	37,12
0,80	6,94	4,63	32,48
0,90	4,88	3,26	28,87
1,00	3,56	2,38	25,98
1,25	1,83	1,22	20,79
1,50	1,06	0,71	17,32
1,75	0,67	0,45	14,85
2,00	0,45	0,30	12,99

* Load-bearing capacity governed

Three spans with point load			
	Load capacity per meter width at L/200 [kN]	Load capacity per meter width at L/300 [kN]	Load bearing capacity per meter width [kN]
Span L [m]	z-axis	z-axis	z-axis
0,50	28,81	19,21	52,75
0,60	16,79	11,19	43,95
0,70	10,62	7,08	37,68
0,80	7,14	4,76	32,97
0,90	5,02	3,35	29,30
1,00	3,67	2,44	26,37
1,25	1,88	1,25	21,10
1,50	1,09	0,73	17,58
1,75	0,69	0,46	15,07
2,00	0,46	0,31	13,19

* Load-bearing capacity governed



Grating 50 x 1220 mm

Single span with line load			
	Load capacity per meter width at L/200 [kN/m]	Load capacity per meter width at L/300 [kN/m]	Load bearing capacity per meter width [kN/m]
Span L [m]	z-axis	z-axis	z-axis
0,50	74,60	49,73	302,78
0,60	43,95	29,30	210,26
0,70	27,98	18,66	154,48
0,80	18,88	12,59	118,27
0,90	13,33	8,89	93,45
1,00	9,75	6,50	75,70
1,25	5,02	3,35	48,44
1,50	2,91	1,94	33,64
1,75	1,84	1,23	24,72
2,00	1,23	0,82	18,92

* Load-bearing capacity governed

Two spans with line load			
	Load capacity per meter width at L/200 [kN/m]	Load capacity per meter width at L/300 [kN/m]	Load bearing capacity per meter width [kN/m]
Span L [m]	z-axis	z-axis	z-axis
0,50	165,69	110,46	302,78
0,60	99,83	66,55	210,26
0,70	64,47	42,98	154,48
0,80	43,91	29,27	118,27
0,90	31,20	20,80	93,45
1,00	22,94	15,29	75,70
1,25	11,90	7,93	48,44
1,50	6,93	4,62	33,64
1,75	4,39	2,92	24,72
2,00	2,95	1,96	18,92

* Load-bearing capacity governed

Three spans with line load			
	Load capacity per meter width at L/200 [kN/m]	Load capacity per meter width at L/300 [kN/m]	Load bearing capacity per meter width [kN/m]
Span L [m]	z-axis	z-axis	z-axis
0,50	134,21	89,48	378,48
0,60	80,24	53,49	262,83
0,70	51,56	34,37	193,10
0,80	35,00	23,33	147,84
0,90	24,81	16,54	116,81
1,00	18,21	12,14	94,62
1,25	9,42	6,28	60,56
1,50	5,48	3,65	42,05
1,75	3,46	2,31	30,90
2,00	2,33	1,55	23,65

* Load-bearing capacity governed

Single span with point load			
	Load capacity per meter width at L/200 [kN]	Load capacity per meter width at L/300 [kN]	Load bearing capacity per meter width [kN]
Span L [m]	z-axis	z-axis	z-axis
0,50	47,67	31,78	75,70
0,60	27,90	18,60	63,08
0,70	17,69	11,80	54,07
0,80	11,91	7,94	47,31
0,90	8,39	5,59	42,05
1,00	6,13	4,09	37,85
1,25	3,15	2,10	30,28
1,50	1,83	1,22	25,23
1,75	1,15	0,77	21,63
2,00	0,77	0,51	18,92

* Load-bearing capacity governed

Two spans with point load			
	Load capacity per meter width at L/200 [kN]	Load capacity per meter width at L/300 [kN]	Load bearing capacity per meter width [kN]
Span L [m]	z-axis	z-axis	z-axis
0,50	65,26	43,51	93,22
0,60	38,36	25,57	77,68
0,70	24,39	16,26	66,59
0,80	16,44	10,96	58,26
0,90	11,60	7,73	51,79
1,00	8,48	5,65	46,61
1,25	4,36	2,91	37,29
1,50	2,53	1,69	31,07
1,75	1,60	1,06	26,63
2,00	1,07	0,71	23,31

* Load-bearing capacity governed

Three spans with point load			
	Load capacity per meter width at L/200 [kN]	Load capacity per meter width at L/300 [kN]	Load bearing capacity per meter width [kN]
Span L [m]	z-axis	z-axis	z-axis
0,50	67,03	44,68	94,62
0,60	39,42	26,28	78,85
0,70	25,07	16,71	67,58
0,80	16,90	11,27	59,14
0,90	11,92	7,95	52,57
1,00	8,72	5,81	47,31
1,25	4,49	2,99	37,85
1,50	2,60	1,74	31,54
1,75	1,64	1,09	27,03
2,00	1,10	0,73	23,65

* Load-bearing capacity governed